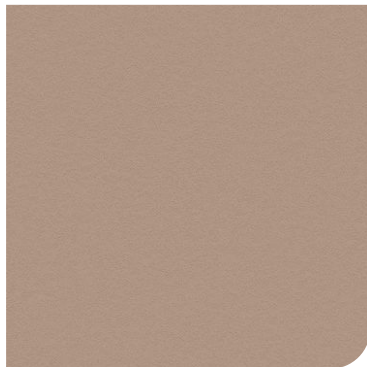


**GENERAL SPECIFICATIONS**

Category	Sub-category
<b>Concrete</b>	<b>Pure</b>
Finishes	<b>Textured</b>
<b>Textured</b>	Type of product
	<b>PVC</b>
Width	Length
<b>122cm</b>	<b>40 meters</b>
Adhesive	<b>Acrylic PSA with air release system</b>
Warranty	<b>10 years</b>
Stretchable	<b>Stretchable</b>
Resistance to scratch	<b>Average</b>
Pattern direction	-
Thickness (average by category)	<b>240 µm</b>
Storage condition (maximum 3 years from delivery)	<b>5° C to 30° C</b>
Installation method	<b>Dry</b>
Installation area	<b>Interior</b>
Installation temperature	<b>12° C to 38° C</b>
Installation method (ABBA - ABAB)	<b>ABAB</b>


**CERTIFICATIONS**

CE Wallcovering (EN15102)	<b>Compliant</b>	Color fastness to rubbing (ISO 105-X12) - Assessment according to grey scales	<b>4-5 (Length and width)</b>
REACH	<b>Compliant</b>		
Aldehydes after emission (CMR ISO 16000)	<b>Pass</b>	Color fastness to shampooing (ISO 18168)	<b>Excellent</b>
Volatile Organic Compounds Testing (EN16516)	<b>A+</b>	Color fastness to water (ISO 105-E01)	<b>Excellent</b>
Fire rating (EN13502)	<b>Coming soon</b>	Liquid absorbency capacity (ISO 9073-6 2000)	<b>11.50%</b>
Anti-fire door (ANSI/UL 10C - ANSI/UL 10B)	<b>Coming soon</b>	Liquid wicking rate (ISO 9073-6 2000)	<b>0 mm</b>
Wall covering - specification for cork roll (EN13085)	<b>Not required</b>	Dimensional stability (ISO 3759) - 24h at 50° C - 65% humidity	<b>0.25 mm</b>
IMO/MED Modul B - E	<b>Compliant</b>	Heat and thermal cycle resistance	<b>Coming soon</b>
RAIL (ISO 5658 - 2:2006 + A1:2011)	<b>Compliant</b>	Color fastness to light	<b>Coming soon</b>
Stain resistance (Tchibo)	<b>Excellent</b>	Adhesion Test	<b>24 hours after installation: 1.43 Kg/cm</b>
Antibacterial properties JIS Z 2081 am. 1 (2012)	<b>Compliant</b>	Moisture resistance	<b>Coming soon</b>
Spongeability (EN12956)	<b>No visible change</b>		
Washability (EN12956)	<b>Extra-washable</b>		
Scrubability (EN12956)	<b>Visible change</b>		

**CARE AND MAINTENANCE**
**DURABILITY:**

This product offers exceptional resistance to water, dirt, abrasion, UV rays and wear (yellowing, crackling, scaling, delamination).

**MAINTENANCE:**

Apply a mild soap to clean the surface of the film, such as a pH neutral detergent. Avoid using products with excessively acidic or basic pH levels. For stubborn stain removal, apply hot water (not boiling). If necessary, use a solution of isopropyl alcohol and water (70% ISO, 30% H2O). However, do not use this solution to printed Cover Styl surfaces. - When cleaning the film surface, only use soft cloths or sponges to avoid causing any damage. - Avoid using cleaning products that are organic-based, such as ammonia or polish, as they can be harmful to the vinyl. Cleaning detergents, bactericides, and virucidal products should be tested on a hidden section prior to use. - For Cork references, due to their ability to resist dust and dirt, minimal cleaning and care is required. Use a brush with gentle bristles to clean these surfaces. In the event of wet or damp stains use an absorbent cloth to wipe away the moisture and meticulously dry the affected area as soon as possible. By following these instructions, you can ensure the longevity and appearance of your vinyl. Persistent stains indicate inadequate care and maintenance. In such cases, consider using a patch repair method (not guaranteed but effective and economical) or replacing the entire vinyl.

Non-contractual visuals and data, Cover Styl reserves the right to change the composition of its films at any time. The rendition of the colours and finishes on the computer may vary according to the screen and not give a true representation of the true appearance. We therefore recommend you order a sample on line or contact us so that we can examine the finish that best adapts to your requirements. Due to the slight differences in colour in production runs, we advise you to purchase the amount you require in one go to avoid any difference in appearance in the execution of your Cover Styl project.